

BLUE

MICRO-BALANCER

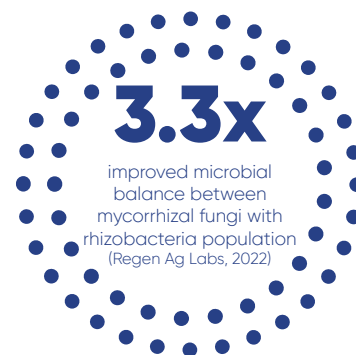
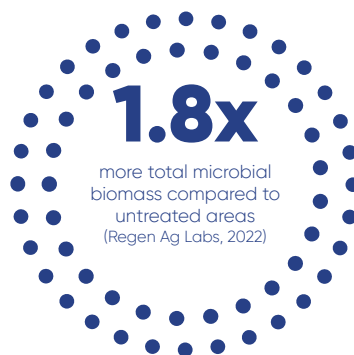


MB-COMPLETE is Formulated with Technology to Serve Nature and Crop Needs

-  **SOIL FUNCTION**
-  **STRESS TOLERANCE**
-  **NUTRIENT EFFICIENCY**
-  **EARLY SUCCESS**
-  **PLANT BUILDING**

BRINGING BALANCE TO THE SOIL MICROBIOME

- Improve root development to promote more efficient water and nutrient use with patented **GZA Technology**
- Feed and promote native soil biology including beneficial rhizobacteria and mycorrhizal fungi with **plant extracts** and **activated humic substances**
- Improve availability of fertilizer nutrients and increase release of soil nutrients with patented **carbon complex and microalgae extract**
- **Increased microbial populations** can help facilitate improved P transport and utilization in the rhizosphere



PACKAGING

- 2,000 lb tote
- 50 lb bag

MB-COMPLETE ANALYSIS

Sulfur (S)	5.0%
Boron (B)	2.5%
Copper (Cu)	1.0%
Iron (Fe)	4.0%
Manganese (Mn)	5.0%
Zinc (Zn)	5.0%

Derived from: Sodium Calcium Borate, Copper Oxide, Copper Sulfate, Iron Oxide, Iron Sulfate, Manganese Oxide, Manganese Sulfate, Zinc Oxide, Zinc Sulfate.

MEETING THE CROP'S NEEDS FOR MICRONUTRIENTS

Crop	Yield	Zn	Mn	Fe	B	Cu	S
Corn	180 bu/ac	0.17	0.14	0.24	0.05	0.02	9
Soybean	60 bu/ac	0.14	0.1	0.32	0.14	0.05	11
Wheat	80 bu/ac	0.12	0.18	0.2	0.03	0.02	6
	MB-Complete @ 10#/A	0.5	0.5	0.4	0.25	0.1	0.5

Source: Ohio State University Extension (<https://ohioline.osu.edu/factsheet/anr-74>)