



Physiostart®

0-0-0

HIGH EFFICIENCY STARTER

TIMAC AGRO TECHNOLOGY

Our patented formulas are derived from nearly 60 years of research and development in plant extract technology. Through precise methods, our extracts are evaluated for their specific effects at each stage of crop development. By enriching selected extracts with macro- and micronutrients, we create bionutritional formulas that meet the ever-changing needs of the crop. Better yield and quality benefit our customers and are the result of improved emergence, vegetative growth, and reproductive performance.

As a company, our mission is to improve agriculture by focusing on four major areas of service to growers:

- Relentless innovation
- Flexible manufacturing
- Optimized applications
- Partners in the field

FEATURES

Physiostart is a soil conditioner proven to provide labile calcium and is formulated with our patented Physio+ Complex. The granular product supplies key nutrition in the forms of calcium, sulfur, magnesium, and trace amounts of boron, iron, and zinc. Physiostart works well on orchards, vineyards, vegetables, fruits, and in both no-till and conventional row crops. It can be used alone or blended with other granular fertilizers.

KEY BENEFITS

- Calcimer provides labile calcium, helps increase availability of soil nutrients, and improves soil structure
- Delivers critical micronutrients
- Formulated with our patented Physio+ Complex



APPLICATION

25-400 lbs/ac. Can be blended with fertilizer or applied alone. If soil pH is between 6.5 and 7, blending is recommended. 200-400 lbs/acre can be used in fruit tree and vegetable production to increase calcium. As little as 25 lbs/ac is shown to benefit corn, small grains, and grass reseeding establishment.

Please refer to soil tests and the advice of your Timac Agro sales representative for specific recommendations.

PACKAGING SIZE

- 50 lb bag
- 1,333 lb super sack

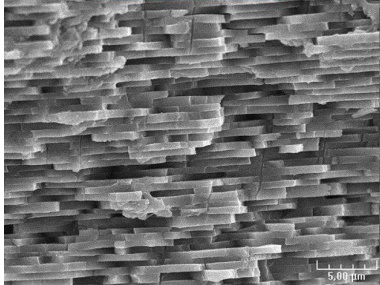


Physiostart[®] 0-0-0

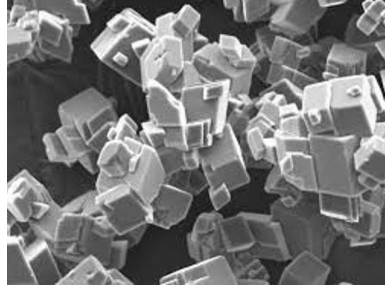


HIGH EFFICIENCY STARTER

CALCIMER & PHYSIO+



Traditional limestone is the result of extreme pressure and weight from the earth, resulting in a linear, compressed structure.



Harvested from shallow sea deposits, Calcimer has a more variable, less compressed structure.

CALCIMER is highly soluble marine calcium carbonate that has endless plant benefits, including better root development, nutrient uptake, crop quality, and yield.

Field research shows Physiostart treated crops have improved root development, helping plants maximize nutrient and water uptake.

Photos from sod field research, left, illustrate Physiostart's impact on plant rooting.



Control



Physiostart



ANALYSIS

Homogenous granules containing all nutrients.

Calcium (Ca)	19.5%
Magnesium (Mg)6%
Sulfur (S)	4.8%
Boron (B)	0.15%
Copper (Cu)	0.08%
Zinc (Zn)	0.25%

Derived from: Marine Calcium Carbonate, Calcium Borate, Zinc Oxide, Copper Sulfate, Magnesium Sulfate.
SGN = 300-400